



Big White Ski Resort, British Columbia

December 11 & 12, 2021

SUPPLEMENTARY REGULATIONS

1. Introduction

1.1 Jurisdiction

West Coast Rally Association (WCRA) will promote three performance rallies on **Saturday, December 11**, and **Sunday, December 12, 2021**. The events will be known as **The National Big White Winter Rally**, **Big White Winter Rally Regional One**, and **Big White Winter Rally Regional Two**.

The events will be held under the Rally General Competition Rules and National Rally regulations of the Canadian Association of Rallysport (CARS), including all bulletins issued. Where applicable, the regional portions of the event will be held under the Western Canada Rally Championship Series Regulations.

These publications are available from the RPM Region Director, Martin Burnley, by emailing westcoast@carsrally.ca. They are also available for download at www.CARSRally.ca and www.rallybc.com.

1.2 Road surface

The event is a winter performance rally consisting of special stages and transits. Stage road surfaces include ice, snow, and/or gravel, or a combination thereof. The rally runs in an area with variations in altitude ranging from approximately 863 m to 1635 m above sea level. The event will include night stages.

1.3 Event Length

National: The total length of the event will be approximately 266 km with 67%, or 178 competitive km over 10 special stages on Saturday and Sunday. The rally will be held in three legs: Leg 1 (Stages 1 through 4) Saturday afternoon and evening, Leg 2 (Stages 5 through 8) Sunday morning, and Leg 3 (Stages 9 and 10) Sunday afternoon.

Regional One: The total length of the Saturday Regional One will be 125 km with 50%, or 63 competitive km over the first 4 special stages (Leg 1) on Friday.

Regional Two: The total length of the Sunday Regional Two event will be 140 km with 82%, or 115 competitive km over special stages 5-10 of Legs 2 and 3.

Fuel Stops: The maximum distance between fuel stops is 76.15 km. The distances between Refuel Zones (RZ) are approximately as follows:

	Transit (km)	Stage (km)
RZ0 to RZ1	34.62	30.76
RZ1 to RZ2	34.91	33.78
RZ2 to RZ3	6.70	40.01
RZ3 to RZ4	6.70	40.01
RZ4 to Finish	6.70	40.01

1.4 Public Health Orders

The 2021 Big White Winter Rally takes place in British Columbia under provincial public health orders. The current Interior Health regional restrictions are available online.

<https://news.interiorhealth.ca/news/provincial-and-regional-restrictions/>

At the time of posting, Interior Health mandates that any outdoor gathering of more than 100 participants requires proof of vaccination for all participants. Please ensure all attendees associated with your team meet these requirements. Vaccinated participants from outside BC will be required to present valid passports from their regulatory authorities in keeping with provincial requirements:

<https://www2.gov.bc.ca/gov/content/covid-19/vaccine/proof#province>

Masks are mandatory in all indoor public spaces, including the Westridge Warming Hut. Indoor gatherings also require contact tracing information including full name and phone number be provided for all attendees. **Please maintain a team list of these contacts for this purpose if needed.**

Public Health Orders can change at any time. Please familiarize yourself with the links above. Please be attentive to and compliant with any related updates provided by the organizers. The safety of everyone involved, including the host community, and the continued success of the Big White Winter Rally are contingent upon the participation and cooperation of all involved with this event.

Given indoor gathering restrictions, we strongly advise all teams to come prepared with everything needed for extended time outdoors including extra layers, auxiliary shelters, and extra fuel for warming of vehicles. We will update the guidelines around the use of the Westridge Warming Hut closer to the event. Big White is a winter environment and colder than average conditions are forecasted during this 2021-2022 La Nina season.

2. Organization

2.1 Championships

The events are insured and sanctioned by the Canadian Association of Rallysport (CARS) and are part of the following championships:

- Canadian Rally Championship (National Portion)
- Western Canadian Rally Championship (Regional 2)

2.2 Organizing Committee

Organizer/Hospitality	Jennifer Daly	jennifer@rallybc.com
Organizer/Registrar/Treasurer	Fawn Hall	fawn@rallybc.com
Organizer/Clerk of the Course	Keith Morison	clerk@bigwhiterally.com
Volunteer Coordinator	Geoff Hill	geoff@rallybc.com
Chief Scrutineer	Paul Westwick	paul@rallybc.com 6046174132
Scoring	Paul Westwick	paul@rallybc.com 6046174132
Service Park Coordinators	Robin Latremouille	service@rallybc.com
	Amber Latremouille	
Net Control	Tony Latham	tony@rallybc.com
Safety Officer	Dave Steeper	steeper@bigwhiterally.com
Rally Safe Coordinator	Keith Morison	rallysafe@bigwhiterally.com
Media Permissions	Warwick Patterson	warwick@formulaphoto.com
Website / IT / Team Profiles	Monique Song	mysong9383@gmail.com
Course Opening	Team Fugawi?	
Course Closing	Beast Sweep BC Extraction and Safety Team	
Event Communications Host	Orchard City Amateur Radio Club	

2.3 Stewards

Senior Steward	Tom Burgess	tomburgess@shaw.ca
Steward	Jorge Dascollas	jorge@rallypromoter.ca

2.4 Venues

The 2021 event will be based entirely at the Gem Lake Parking Lot, approximately 13.4 km from the junction of Big White Road and Hwy 33. There will be limited access to Westridge Warming Hut located in the Gem Lake Parking lot. GPS Coordinates are 49.744280, -118.979730.

Rally Headquarters	Westridge Warming Hut / Gem Lake Parking Lot
Registration	Zoom / Gem Lake Parking Lot
Technical Inspection	Gem Lake Parking Lot – Service Area
Speed Factor 85+ Start Order Draw	Gem Lake Parking Lot
Introduction of Officials	Gem Lake Parking Lot
Novice Drivers Meeting	Gem Lake Parking Lot
Service Park / Official Start	Gem Lake Parking Lot
Post Rally Parc Fermé	Gem Lake Parking Lot
Podium Ceremonies	Gem Lake Parking Lot

2.5 Official Notice Board location

The official Notice Board will be at the Gem Lake Parking Lot from the beginning of the event to the end.

2.6 Virtual Notice Boards

The event will be using an online notice board that will be available at BigWhiteRally.com. Every effort to duplicate the contents of the official notice board will be made. In the event of conflicting or missing information, the official notice board will take precedence.

The event will also be using the Sportity App (<https://sportity.com/app>) which offers push notifications to the users and keeps notices available for offline viewing when outside of cell coverage. The event password will be BWWR21

3. Schedule

October 30 Entries Open
November 26 Early Entries Close
November 28 Provisional Start List published
 Detailed Stage Schedule released to registered competitors

December 08 Late entries Close (1900 PST)

Friday, December 10

12:00 Service Park Opens for self-directed move-in. (See section 13)
 19:00 – 21:00 Competitor Registration Gem Lake Parking Lot

Saturday, December 11

07:00 HQ Opens Gem Lake Parking Lot
 07:15 Late Competitor Registration / Volunteer Registration (*Gem Lake Parking Lot*)
 07:30 Mandatory Novice seed 5&6 Meeting (*Gem Lake Parking Lot*) (See section 9.1)
 07:46 Sunrise
 08:00 Official Entry List Posted (Official and Virtual Notice Board)
 08:00 – 13:00 Recce
 11:00 – 14:00 Technical Inspection (*Service Park, Gem Lake Parking Lot*)
 13:15 85+ Speed Factor Start Order Draw (*Gem Lake Parking Lot*)
 14:00 Steward Meeting 1 (*Gem Lake Parking Lot*)
 15:00 Final Start Order Posted
 15:30 Introduction of Officials and Drivers Meeting (*Gem Lake Parking Lot*)
 15:56 Sunset
 16:00 First Car Out – Leg 1 National/Regional 1
 17:56 First Car In - Service 1
 20:37 First Car Finishes – Leg 1 National/Regional 1
 21:30 Steward Meeting 2 (*TBA*)
 22:30 Westridge Warming Hut Closes

Sunday, December 12

07:30 Westridge HQ Opens
 07:47 Sunrise
 07:45 Sunday Start times posted on official notice board and online
 08:30 First Car Out – Leg 2 National/Leg 1 Regional 2 (*Service Park @ Gem Lake*)
 10:11 First Car In – Service 2
 12:32 First Car In – Service 3, End Leg 2 National, End Leg 1 Regional 2
 13:02 First Car Out – Leg 3 National, Leg 2 Regional 2
 14:53 First Car Finishes, Leg 3 National, Leg 2 Regional 2
 15:25 Steward Meeting 3
 15:45 Podium/Trophy Presentation based on unofficial scores (*Gem Lake Parking Lot*)
 15:56 Sunset
 16:00 Provisional Scores Posted (*Gem Lake Parking Lot*)
 16:30 (est.) Scores Final (*Gem Lake Parking Lot*)

4. Entries

4.1 Closing Date for entries

Regular Entries will be accepted until 23:59 PST on November 26, 2021

Late Entries will be accepted until 21:00 PST on December 10, 2021, and will be subject to a late entry penalty of \$300 CAD.

4.2 Entry procedure

Teams are encouraged to enter using the online entry form at BigWhiteRally.com or at

<https://www.rallywest.com/signup/competitor/BigWhiteWinterRally>

4.3 Number of entrants

A total of **35** entries will be accepted in the order of **paid** entries received. If the 35 entry limit is exceeded, competitors will be placed on a waiting list and will be informed no later than November 28 if their entry will be accepted. Entrants on the waiting list will continue to be offered spaces if they become available after this deadline.

4.4 Entries will be accepted in the following classes:

Open 4WD
Open 2WD
Production 4WD
Production 2WD

4.5 Vehicles competing under permit from other sanctioning bodies will be classified according to CARS regulations.

4.6 Entry fees

Entry Fees for the event, in Canadian Dollars, will be as follows:

Paid November 26 or before:

National	\$1150
National and/or Both Regionals	\$1150
Regional 1 (Saturday) or Regional 2 (Sunday) Only	\$800
Each additional 115 Square Foot service space	\$50
Recce Only	\$150

Paid after November 26:

National	\$1450
National and/or Both Regionals	\$1450
Regional 1 (Saturday) or Regional 2 (Sunday) Only	\$1100
Each additional 115 Square Foot service space	\$75
Recce Only	\$250

The entry fee includes:

- Entry to the Rally
- One set of event documents and vehicle identification
- One Competitor Official Route-book
- One set of Service Crew Instructions and vehicle identification
- \$132 per car insurance levy
- \$220.00 per car Rallysafe/Rallywest Timing fee
- \$15.00 per car Rally Pacific Motorsports Levy

4.7 Payment details

There is no ability for cash transactions at the event. Please arrange all purchases in advance or by the methods listed below.

Interac e-Mail transfer to fawn@rallybc.com

Password: BWWR

Please note that Interac eMail transfer is our preferred method of payment.

Credit Card payments should be made by visiting
<https://squareup.com/store/morison-communications>
or arranged through Fawn at fawn@rallybc.com

4.8 Refunds

Full refunds will be issued up to 48h before the opening of registration. Refunds will be governed as detailed in CARS 2016 GCR 4.10. Entrants who are excluded from the event or whose cars do not pass technical inspection are not eligible for refunds. **Refunds will be issued in Canadian Dollars.**

4.9 US Competitors

Residents of the USA who do not hold a CARS license may compete with an American Rally Association or NASA license, subject to the note below. US competitors are encouraged to obtain and confirm that they have personal medical insurance coverage for themselves and their crew before entering Canada.

ARA and NASA licensed competitors must register with CARS and complete the CARS event entry permit form available on the CARS website: www.carsrally.ca. The form and fee of \$75 CDN should be sent to CARS but may be relayed to CARS through the event registrar if necessary.

If you are paying for your permit at the event, print out the form and bring it completed to registration with payment.

NO RALLY LICENSES WILL BE ISSUED AT THE EVENT.

5. Insurance

The event carries \$10 Million general liability coverage as well as Participant injury insurance as facilitated through the Canadian Association of Rallysport. A summary of the coverage can be found at:

https://carsrally.ca/wp-content/uploads/2015/09/CARS-Insurance_Summary_May-2021-1.pdf

6. Advertising and Identification

6.1 Competitors are required to make space on all competing vehicles as outlined in NRR 12.4.1.8 and 12.4.1.9, which will be used by the sanctioning body.

6.2 The event may provide two 25cm high and approximately 10cm wide panels and requests that all competitors place this on both sides of the vehicle, immediately ahead of and in line with the CARS reserved space.

6.3 Competition and Recce numbers will be supplied in the registration packages.

The Recce numbers **MUST** be installed on the upper right side of the windshield and must be kept clean at all times during recce.

6.4 Identification package elements from other sanctioning bodies must be covered or removed.

7. Tires

Studded tires, meeting CARS NRR 12.4.3 are permitted for all classes in the national and the two regional portions of the Big White Rally.

8. Fuel

Fuelling of cars must be done in the designated fuel zone in the service park at all times during the event. There is no fuel at the resort and teams should be prepared with all the fuel they need prior to arriving.

9. Reconnaissance (NRR 13.6)

- 9.1 The Mandatory Novice Meeting, in addition to general novice content, will review safe recce procedures and basic advice on making notes for the event. Attendance is strongly recommended for teams without a lot of recce experience but is only mandatory for novices in seeds 5 and 6.
- 9.2 Two-pass Reconnaissance will be available for all. Recce is not mandatory but highly encouraged, as the provided stage instructions are rudimentary. Crews may encounter traffic in both directions, and care/consideration **MUST** be taken by all competitors. Depending on road conditions and logging activity, some of the stages may be recced by convoy.
- 9.3 Recce is prohibited outside the designated times provided in the recce instructions. The maximum speed for recce on the stages is 60km/h or the posted legal limit, whichever is lower.
- 9.4 The use of stage rally prepared cars on recce is permitted, although recce penalties are doubled where a rally prepared car is involved.
- 9.5 Please also Refer to CARS NRR 13.6.
- 9.6 Teams interested in doing recce only **MUST** register for the event and pay the recce only fee. This fee covers the cost of materials supplied for recce. Recce only teams will be required to follow the recce schedule and are subject to all fines and penalties as listed above.

10. Registration and Administrative Checks

Event registration will be done electronically before the event. The registrar will require all documents to be submitted by email, including waivers for all team members. The registrar may arrange a zoom meeting with one team member to confirm all registration and public health order documents. Otherwise there will be a brief in person registration for document check and package pick up at the Gem Lake Parking Lot as described in the event schedule.

Each rally team must provide a contact list (full name, phone number) of all persons attending the event as part of registration, in keeping with public health guidelines.

Required Registration Documents List Checklist

Entry form completed online

CARS General waiver

CARS COVID-19 Waiver

Vaccination passports for all attending - driver, codriver, service crew, anyone attending the service area with the team

Contact list for all team members (full name and phone number)

Self-declaration form

Registration Documents - may be required, please have on hand

Driver's license for drivers and codrivers

License and registration for rally car, recce car, service vehicle

Event packages including routebook, recce instructions, and car numbers will be picked up in person at the Gem Lake Parking Lot on Friday evening or Saturday morning. This package will provide all the information necessary to traverse the course both through recce and the event. Vaccination passports may also be scanned at this time.

The competitor's time card for the entire event will be issued at the introduction of officials on Saturday.

11. Scrutineering (Technical Inspection)

- 11.1 Scrutineering will take place at the Westridge Parking Lot Service Park.
- 11.2 Teams will be inspected by appointment. Teams can select an appointment time with online registration before the event, or at registration. Times will be allocated on a first-come, first-serve basis.
- 11.3 All studded tires being used at the event must be presented at technical inspection and marked as approved. (Details TBC)
- 11.4 You will be required to present the vehicle's logbook, with event and entrant information filled out. The logbook will be returned to you at the completion of your technical inspection.
- 11.5 RallySafe units will be installed at Tech Inspection. Teams using loaner fitting kits MUST have them installed before bringing their cars to tech inspection.
- 11.6 Please review CARS NRR 21.6 for complete rules regarding Technical Inspection.

12. Other procedures

- 12.1 Official Start
 - The official start of the event will be at the exit from Service.
- 12.2 Finish procedure
 - Once a team has checked in at the last control of the event, they are to park in the post-event parc fermé and immediately leave the area. See CARS Rule 16.8. Vehicles that are potentially on the National or Regional podium may be held in a separate Parc Fermé or staging area.
 - The exception is that teams may remove their RallySafe units and/or loaner fitting kits before leaving the area.
- 12.3 Timing
 - Stage Finish timing will be done to the previous 1/10 of a second using RallySafe GPS timing.
- 12.4 Official time used during the rally
 - The event will run on Pacific Standard Time (PST), based on RallySafe's GPS time which is displayed on each unit.

12.5 Regroup and Reseed Controls

The first reseed will be after Service 1. The second reseed will be Sunday morning at the start of Leg 2 National, and the third at the exit of Service 3 and start of Leg 3. Reseeds will be calculated in keeping with NRR 15.3.3. Cars will be regrouped after service 2.

Competitors will be expected to check out of service on their correct time as normal. Teams will be assigned their time out of the regroup/reseed control but are asked to proceed to fuelling and then to a holding area beyond the fuelling zone and wait out the rest of the regroup time before starting the transit. There will NOT be a staffed time control, leaving the regroup. There will be no penalties for leaving the regroup early but leaving on your assigned minute ensures you will arrive at the next stage in new start-order. Arrival at the next control will be calculated from the provided out-time of the regroup/reseed control.

12.6 Re-Start Controls

Teams wishing to re-start the event will be able to do so at the start of each leg. Restarting teams will be required to present themselves for re-inspection at least 15 minutes before the first car leaves the start of the leg, or as directed by the chief scrutineer.

13. Service and Fuel

13.1 The Service Park will be located at the West Ridge Parking Lot for the entire event. All service while at the Big White Resort must be done within the service park. All fuelling during the weekend is to take place in the designated fuel area with a fire extinguisher on hand.

13.2 Competitors will be assigned specific service areas in advance. A generic map of the service area will be available once teams have registered, and crews are asked to request their first three choices of location. These will be assigned upon receipt of a paid entry fee on a first-come, first-serve basis. The service map will be provided in advance and teams will be able to identify their pre-assigned spots from this map to assist with self directed move in upon arrival.

13.3 Please drop off your service trailers and all large vehicles at the Service area immediately upon arrival at the resort. Please do not bring large tow rigs into Happy Valley Parking Lot or the resort village. Teams may service overnight. Service vehicles may be packed up and stored in the service lot until teams leave the resort.

13.4 Competitors are to provide specific details to the registrar regarding the size of service vehicles and service space requirements.

The standard service spot is 20'x40' (800 sq.ft). Teams may put whatever they can fit into the service spot. Teams crewing for multiple cars can use the combined service space as they see fit. Teams expecting to exceed the standard service spot footprint can request additional service space at the costs and timelines listed above. (See 4.6)

13.5 Competitors should ensure that any tents or other structures are secured and prepared for possible windy conditions or heavy snowfall.

13.6 To protect the environment, competing vehicles are required to service on tarps or a non-porous ground sheet. (Note, normal tarps can be extremely slippery on snow covered surfaces)

13.7 Competitors are required to carry absorbent materials sufficient to soak up any fuel or liquid spill during service.

13.8 All belongings and refuse shall be removed from the Service Park upon departure.

13.9 Competitors are responsible for sourcing their own fuel for competition, recce, and support vehicles. THERE IS NO FUEL AVAILABLE AT THE RESORT. Please come prepared.

The nearest available fuel is 50 km west on Highway 33.
Esso Station: 1799 Hwy 33 E, Kelowna, BC V1P 1K5

13.10 Teams are advised there will not be any allowance for fuelling between the official start and the end of the first service. You should have enough fuel in the car for the first section of the rally.

- 13.11 Big White Security will be making regular rounds of the service park overnight during the event. It is recommended that teams take appropriate measures to secure their property.

14. US Vehicle Eligibility

Under CARS rules, vehicles registered in any of the United States of America and competing on American Rally Association or National Auto Sport Association rally licenses (plus CARS entry permit) shall be acceptable provided that they meet the requirements of the current American Rally Association or NASA Rally Rules. Entrants whose cars are entered under this provision must be able to produce, upon request by the officials of the event, a current copy of the respective rules. Failure to produce these may result in the vehicle being judged according to CARS rules. Vehicle competition specifications and classes will be as per CARS regulations.

15. Judge of Fact and Driving Standards

- 15.1 Judges of Fact as per GCR 6.3.1 will be able to report on facts to be judged as outlined in GCR 6.3.2 and as detailed in the driving standards listed below in 15.3 to 15.7.
- 15.2 RallySafe tracking may be used as a judge of fact for virtual chicanes used during the event.
- 15.3 Competitors and their Service Crew are required to drive in a courteous and respectful manner throughout the event. Any notified offence which involves speeding, reckless driving, or failing to observe road signs, will be dealt with as outlined in NRR 17.2. Driving that is perceived by the resort to be aggressive or disrespectful will threaten the future of this rally.
- 15.4 If a Service Crew is servicing for more than one competitor, and notification is provided of an offence as outlined in 15.3 above, **each** competitor will be penalized.
- 15.5 Any cases reported to the organizers by the Police for speeding, reckless driving, or failing to observe road signs, will be dealt with as outlined in NRR 17.2.
- 15.6 The event will have radar, manned by event officials, RCMP, or both.
- 15.7 Any "stunting" is a serious violation. A penalty of 10 minutes will be assessed. In addition, the stewards may be asked to assess fines to cover the costs of repair to any property damaged by the behaviour.

16. Prizes

16.1 The following awards will be presented at the Awards Ceremony for the Canadian Rally Championship

First to Third Overall	Driver and Co-driver
First to Third Overall (2WD)	Driver and Co-driver
First in Class Production (4WD)	Driver and Co-driver
First in Class Production (2WD)	Driver and Co-driver
Novice Award	Driver

16.2 The following awards will be presented at the Awards Ceremony for the Regional 1 Rally

First to Third Overall	Driver and Co-driver
First to Third Overall (2WD)	Driver and Co-driver
First in Class Production (4WD)	Driver and Co-driver
First in Class Production (2WD)	Driver and Co-driver
Novice Award	Driver and Co-driver

16.3 The following awards will be presented at the Awards Ceremony for the Regional 2 Rally

First to Third Overall	Driver and Co-driver
First to Third Overall (2WD)	Driver and Co-driver
First in Class Production (4WD)	Driver and Co-driver
First in Class Production (2WD)	Driver and Co-driver
Novice Award	Driver and Co-driver

16.4 The following podia will be held in front of The Westridge Warming Hut for teams and vehicles:

Regional II Overall
National 2WD
National Overall

17. Accommodations

Big White Ski Resort has a wide range of accommodations available for teams coming to the rally. Accommodations with the event group rate can be made through Big White by calling 1-800-663-2722 (Monday-Saturday 0800-1800 PST).

The Big White Winter Rally group code is M2/2122 and must be quoted when booking to access the 25% event discount. The resort currently has a shortage of staff so please be patient when booking.

More information on 2021 accommodations and group rate may be available on the resort website:

<https://www.bigwhite.com/plan-your-trip/special-offers/bw-rally>

Detailed information about buildings and units are available:

<http://www.bigwhite.com/plan-your-trip/accommodation/>

Accommodations can also be arranged on the mountain through various private rental companies.

Please confirm cancellation policies with the resort at the time of booking.

18. Parking

In general, parking is limited to one vehicle per reservation at the resort units. Free parking for additional vehicles is available by requesting Happy Valley parking passes from central reservations when you check-in, with all overflow parking at Happy Valley. Cars without these passes may be subject to penalty. These passes are only available with reservations booked through Big White Central Reservations (including all units booked under the published rally rate).

Heated indoor rally car parking is available at the Inn at Big White for guests staying at the Inn at Big White only.

Please only park large trailers at the Gem Lake Service Area. **DO NOT park your large trailers, trucks, and service rigs along the laneways or roadways of the resort village.** The Gem Lake service area will be open to drop them off. There is no additional large vehicle parking in Happy Valley.

19. Local Factors

The Big White Winter Rally takes place in a snowy mountain range. Supplies including fuel and groceries are limited at the resort. Teams are advised to prepare in advance to avoid unplanned trips to Kelowna.

Temperatures have dropped below -25C/-13F in the past during the rally weekend. Service crews and competitors should be prepared for winter conditions both in service and on stage. The 2021-2022 extended forecast predicts colder than average conditions and access to the indoors may be very limited by public health orders.

20. Social Media

Please post what you want about your own team, and carefully consider the consequences of posting about other teams or the event. Please do not post unconfirmed reports or photos of damaged cars or incident scenes.

Please do not live stream live stage action. We do not want a situation where an incident is broadcast live during the event as it may cause panic and/or distress.

21. RallySafe Vehicle Tracking

The Big White Winter Rally will be using RallySafe vehicle tracking for safety and timing. **Teams are required to arrive with permanent fitting kits already installed in their competition cars.**

Permanent fitting kits can be ordered directly from RallySafe at <https://shop.statusas.com/shop/rallysafe/fitting-kits/rallysafe-permanent-installation-kit-everything-you-need/> teams should plan at least three weeks for delivery from Australia.

Loaner fitting kits are available for a \$50 fee and will be available at documentation pick-up. Cars will need to arrive with full time 12v power (max 5amp fuse) to the co-driver a-pillar bar. The power leads for the RallySafe unit are 22ga wire.

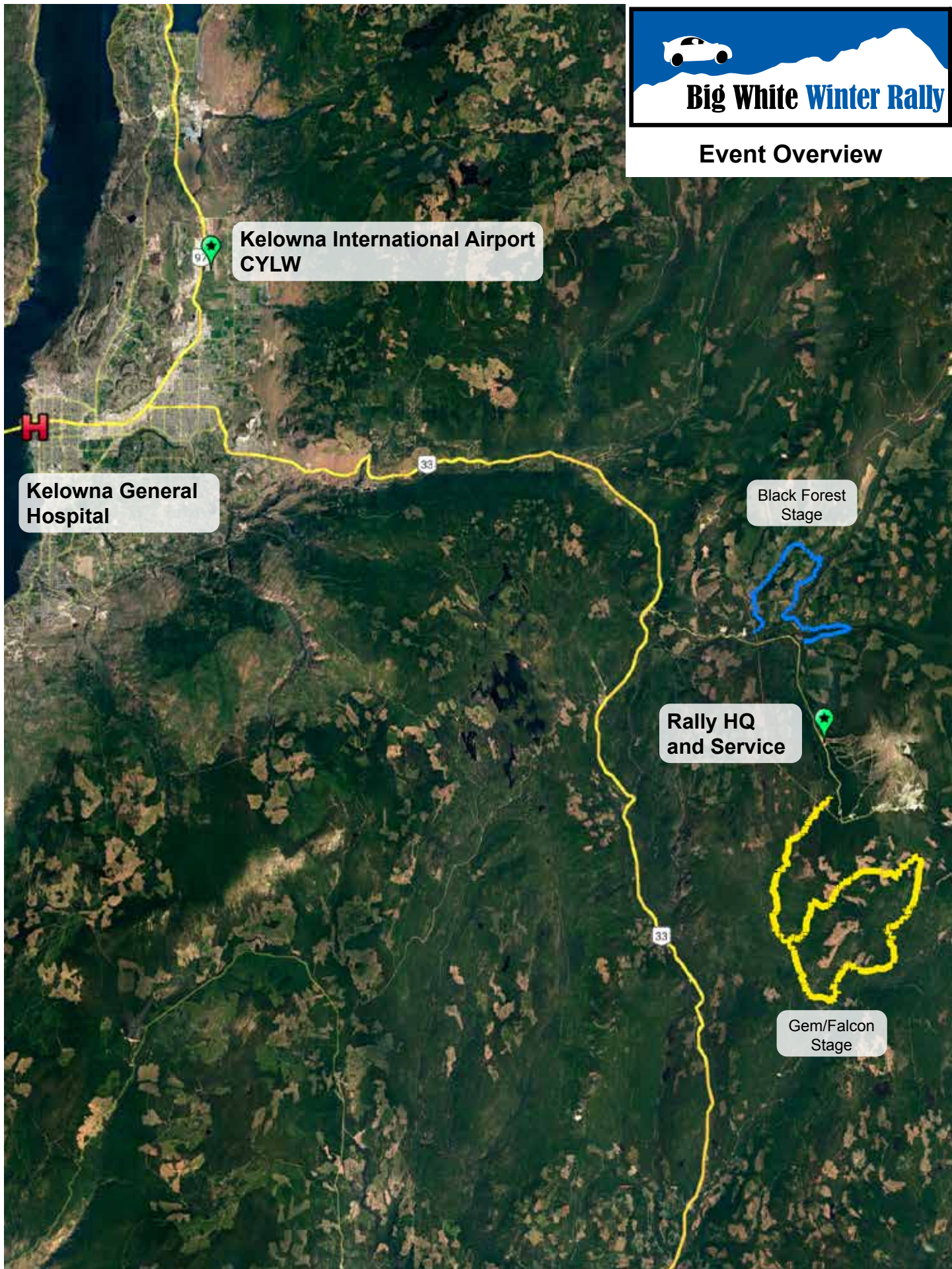
22. Post Rally Celebrations

There are no formal gatherings or awards banquet for the Big White Winter Rally. Please follow current local public health guidelines. Rally participants are encouraged to enjoy local food and beverage businesses. We will provide any additional updates regarding rally specials closer to the event.



Big White Winter Rally

Event Overview



Kelowna International Airport
CYLW

Kelowna General
Hospital

Black Forest
Stage

Rally HQ
and Service

Gem/Falcon
Stage

Big White Winter Rally - Draft Schedule

Section	Map	Transit KM	Stage KM	Target Time	First Car Due
RZ0	Distance to next refuel	34.62	30.76	32 L	
MTC 0	Transit to SS 1	6.40		0:15	16:00
ATC 1				0:03	16:15
SS 1	Black Forest West 1	B to A	15.38	0:15	16:18
FTC 1	Transit to SS 2	18.22		0:50	16:33
ATC 2				0:03	17:23
SS 2	Black Forest West 2	B to A	15.38	0:15	17:26
FTC 2	Transit to Service 1	10.00		0:15	17:41
TC 2a	Service 1 in			0:30	17:56
TC 2b	Service 1 out/ReSeed in			0:15	18:26
TC 2c	ReSeed out / Transit to SS 3	11.85		0:20	18:41
RZ1	Distance to next refuel	34.91	33.78	34 L	
ATC 3				0:03	19:01
SS 3	Black Forest East 1	A to B	16.89	0:15	19:04
FTC 3	Transit to SS 4	17.98		0:50	19:19
ATC 4				0:03	20:09
SS 4	Black Forest East 2	A to B	16.89	0:15	20:12
FTC 4	Transit to End Day 1	5.08		0:10	20:27
MTC 1	End Day 1				20:37
Leg Total		69.53 km	64.54 km	134.07 km	
		51.9%	48.1%		

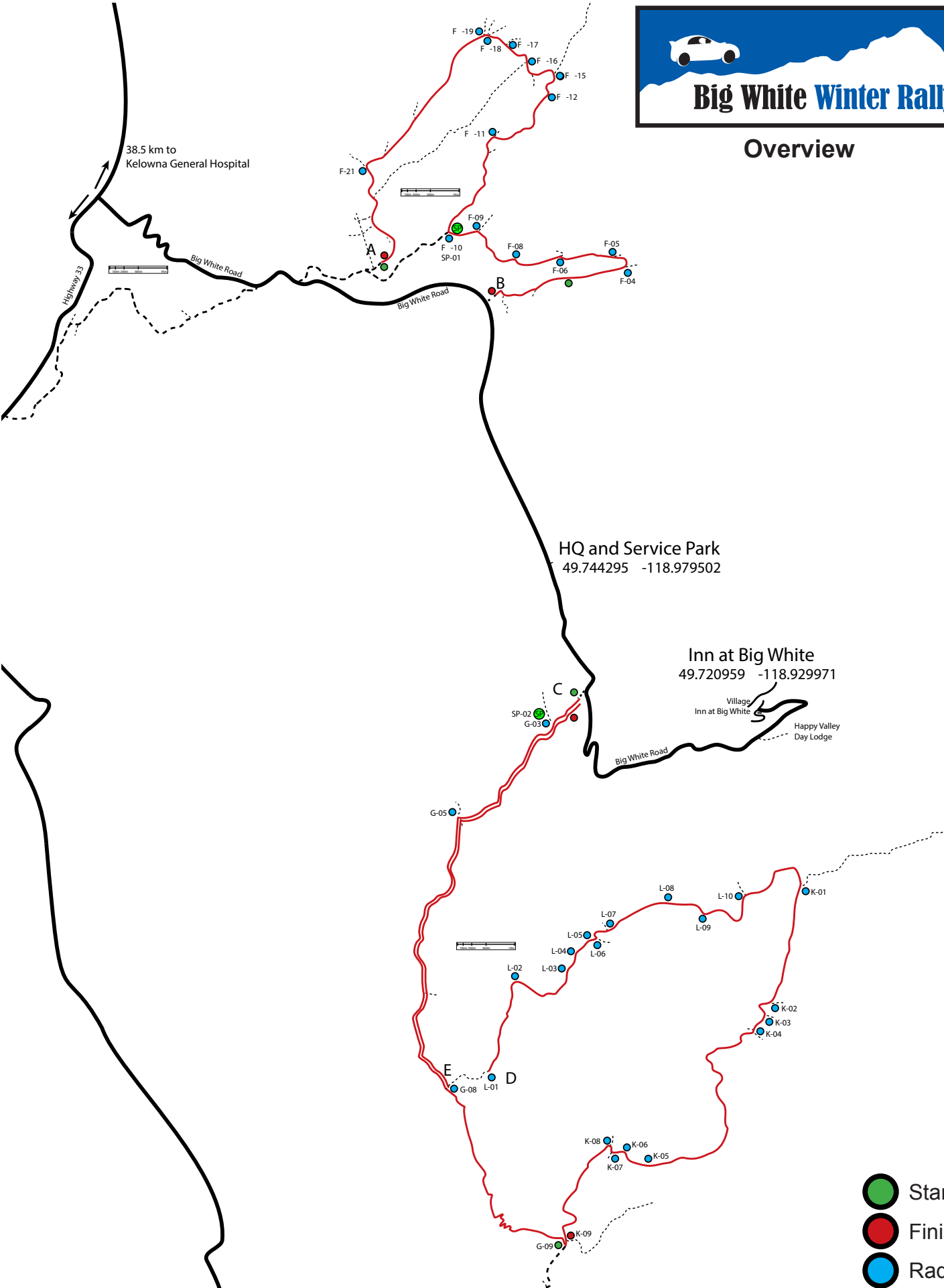
Section	Map	Transit KM	Stage KM	Target Time	First Car Due
MTC 2	Start Day 2 to SS 5	3.00		0:15	8:30
RZ2	Distance to next refuel	6.70	40.01	32 L	
ATC 5				0:03	8:45
SS 5	Gem/Falcon 1	C to D	31.86	0:30	8:48
FTC 5	Transit to SS 6	0.70		0:30	9:18
ATC 6				0:03	9:48
SS 6	Gem Express Return 1	E to C	8.15	0:10	9:51
FTC 6	Transit to Service 2	3.00		0:10	10:01
TC 6a	Service 2 in			0:30	10:11
TC 6b	Service 2 out/regroup in			0:10	10:41
TC 6c	Regroup out / Transit to SS 7	3.00		0:15	10:51
RZ3	Distance to next refuel	6.70	40.01	32 L	
ATC 7				0:03	11:06
SS 7	Gem/Falcon 2	C to D	31.86	0:30	11:09
FTC 7	Transit to SS 8	0.70		0:30	11:39
ATC 8				0:03	12:09
SS 8	Gem Express Return 2	E to C	8.15	0:10	12:12
FTC 8	Transit to Service 3	3.00		0:10	12:22
TC 8a	Service 3 in			0:30	12:32
Leg Total		13.40 km	80.02 km	93.42 km	
		14.3%	85.7%		

Section	Map	Transit KM	Stage KM	Target Time	First Car Due
TC 8b	Service 3 out/Re-seed			0:10	13:02
TC 8c	Re-seed out / Transit to SS 9	3.00		0:15	13:12
RZ4	Distance to next refuel	6.70	40.01	32 L	
ATC 9				0:03	13:27
SS 9	Gem/Falcon 2	C to D	31.86	0:30	13:30
FTC 9	Transit to SS 10	0.70		0:30	14:00
ATC 10				0:03	14:30
SS 10	Gem Express Return 2	E to C	8.15	0:10	14:33
FTC 10	Transit to Finish	3.00		0:10	14:43
MTC 3	Finish - Parc Fermé in				14:53
Leg Total		6.70 km	40.01 km	46.71 km	
		14.3%	85.7%		

Event Totals	Transit KM	Stage KM	Total
	89.63 km	184.57 km	274.20 km
	32.7%	67.3%	



Overview



- Start
- Finish
- Radio